



Altus

clear thinking for Financial Services

Altus Instruction Gateway

For many pension administrators the process of investing members' money with fund managers is a weak link in their operations with the potential for very expensive mistakes. Despite its complexity, with multiple stages of checks and approvals spanning administration and finance departments, the process is generally paper based with manual controls. The Altus Instruction Gateway solves this problem through a combination of automated controls, electronic transmission and real time reporting.





Altus Instruction Gateway

Investment Process

The Altus Instruction Gateway automates the whole investment process from the capture of instructions, through validation, approval, release and transmission, to settlement, reconciliation, exception handling and audit trails. Investment instructions can be transmitted electronically via SWIFT using the ViaNova market practice or by fax or e-mail where ViaNova support is not yet available from a fund manager. In either case, the same process is used giving a consistent set of controls and reports.

Administrators and trustees can access the latest price and holding information direct from fund managers and view consolidated reports across funds and schemes and of performance over time.

The Altus Instruction Gateway also provides the opportunity to streamline related processes with optional extensions for banking system integration, defined benefits investment processing and automated reconciliation.

Ease of Deployment

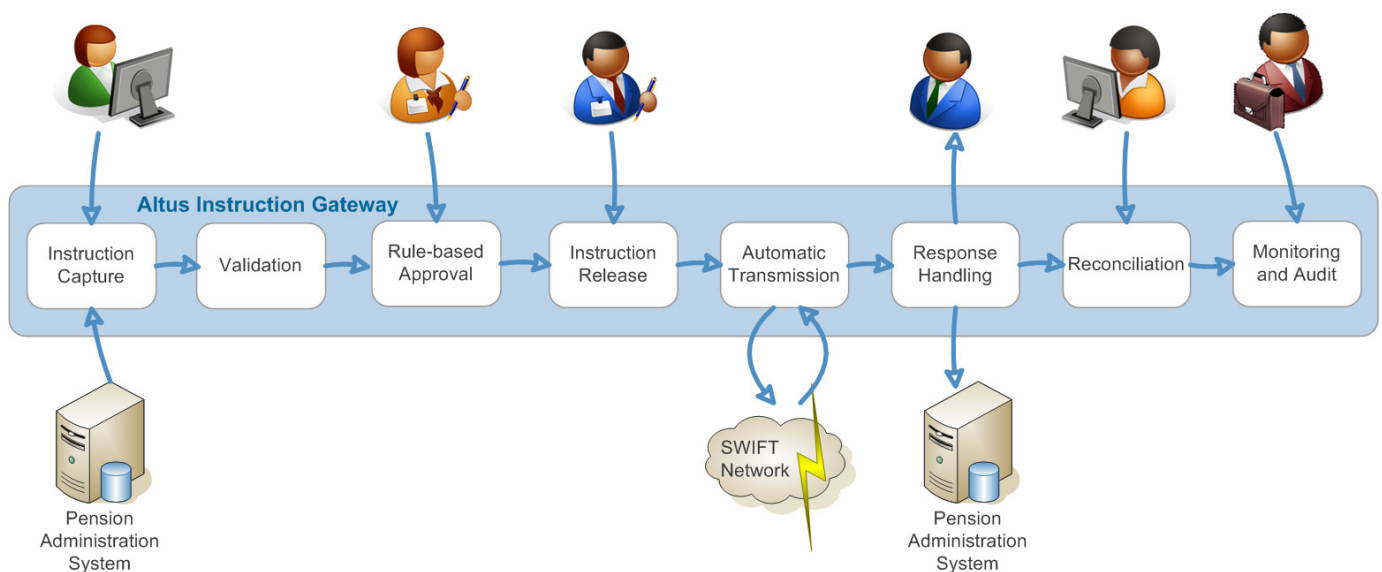
Altus offers the Instruction Gateway as an installed system or hosted service. Its intuitive browser-based user interface, comprehensive set of web-services, flexible data capture mechanisms and choice of economic SWIFT connectivity methods combine to give a wide range of deployment and integration options.

Benefits

The immediate benefit of adopting an automated approach is a reduction in administrative effort through removal of manual processing steps.

More important, however, is the reduction in risk as transcription errors are eliminated, approvals are more strictly controlled and the process more easily audited.

Last, and by no means least, is an improved service to clients by providing instant up to date price and holding information and the potential for faster and more frequent transaction cycles.

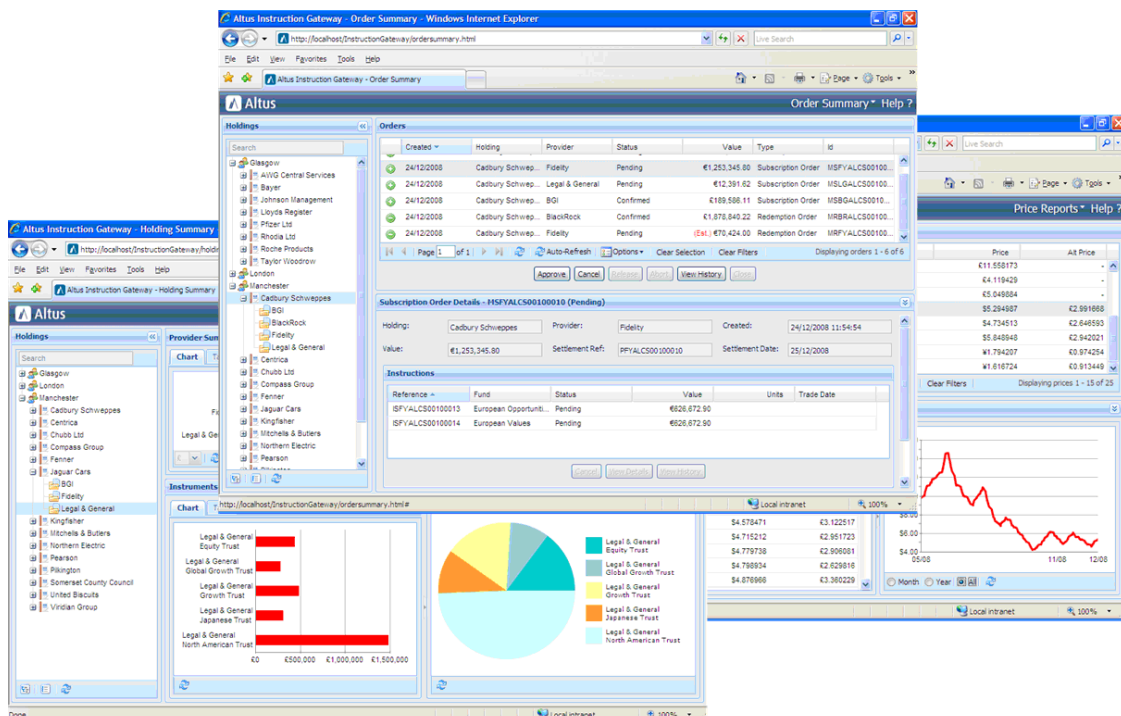




Altus Instruction Gateway

Features

- » Captures investment instruction data from administration systems and users via a range of flexible interfaces
- » Handles multiple layers of approval by authorised members of staff
- » Transmits instructions over the SWIFT network in accordance with the ISO20022 messaging standard and ViaNova market practice
- » Supports fax where fund managers are yet to support ViaNova
- » Intelligently monitors and validates instructions and responses against predefined criteria
- » Automatically alerts supervisors when intervention is required
- » Shows hierarchical views of schemes, accounts, providers and funds and summarises trading activity for each
- » Automates settlement and cash reconciliation
- » Provides supervisors with visibility of the whole process and the means of handling any exceptions
- » Graphically presents price and holding data to administrators, trustees and members
- » Authenticates all access via digital certificate and user password, optionally integrated with corporate network security
- » Authorises individual user actions against a fine-grained access model
- » Encrypts all external network traffic
- » Maintains a full audit trail of all user actions, instructions and responses
- » Isolates administration systems from changes by mapping internal scheme and fund references to external identifiers






clear thinking for Financial Services

Altus understand Financial Services - the products, the processes, the people and the systems that make the whole thing tick. We understand that successful solutions begin with the business and Financial Services companies across the UK depend on our products to handle business critical processes.

Altus Limited

1 Widcombe Crescent, Bath, BA2 6AH

 +44 (0)1225 472830

 enquiries@altus.co.uk

 www.altus.co.uk